

Your Multiple Sleep Latency Test (MSLT)

What to expect

1

CLICK



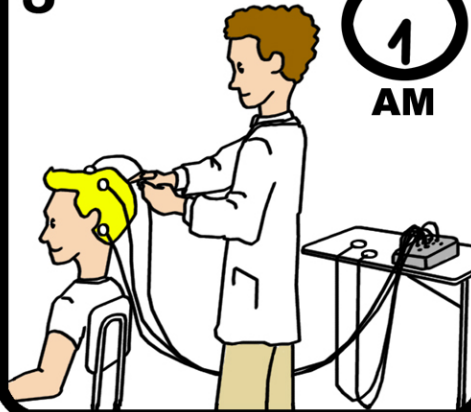
AM

2



AM

3



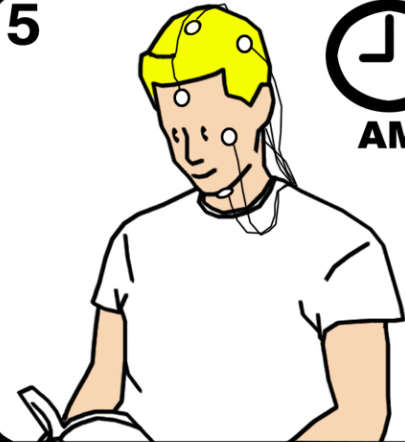
AM

4



AM

5



AM

6



AM

7



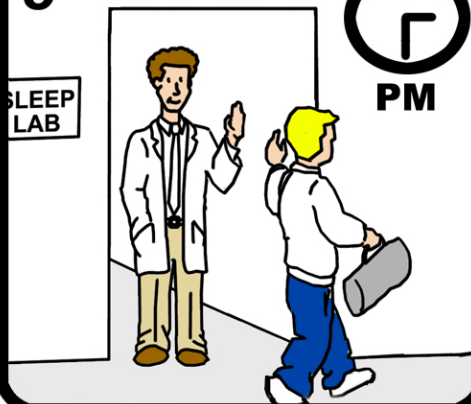
PM

8



PM

9



PM

- 1 - Lights on
- 2 - Patient awake
- 3 - Electrodes reapplied
- 4 - 20 minute nap
- 5 - Patient awake
- 6 - 20 minute nap
- 7 - Patient eats lunch
- 8 - 20 minute nap
- 9 - Patient leaves